



# SONDLAND/DURANT TRUSTEE ROOM

Portland Art Museum, Mark Building  
1119 SW Park Avenue, Portland, OR 97205

## The Museum Facility Charge includes:

**Access to Facilities\*** *Contact Artful Venues Sales Team or refer to contract for access hours and details*

**Audio Visual** Podium with microphone in its standard position, drop-down screen, video projector, basic sound system

**Custodial** General custodial staff and cleaning of the contracted area

**Fire Permit** Up to \$150 of Portland Fire and Rescue fee coverage\*\*

**Internet** Open network Wi-Fi is included for approximately 25 users

**Power** One (1) 120v, 20 amp circuit

**Security** Basic Museum security staffing\*\*\*

**Furniture** Set-up and striking of customized floorplans (within fire code restrictions)

- (5) 60" round tables
- (8) conference tables
- (25) boardroom chairs
- (2) 96"x30" tables
- (1) 72"x18" table
- (1) 72"x30" table
- (2) rolling coat racks
- (1) easel

**Possible Additional Fees** *Contact Artful Venues Sales Team or refer to contract for details*

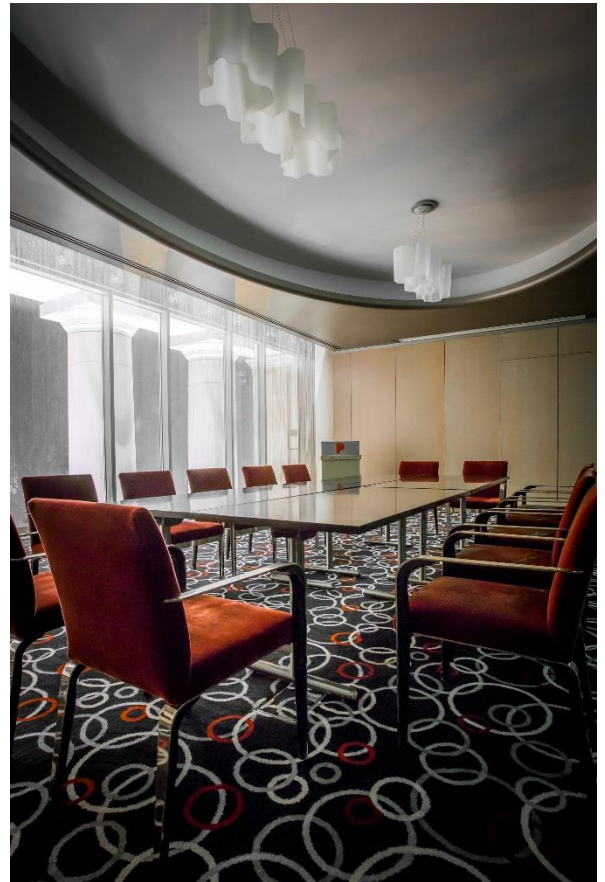
\*Occupancy by client or contracted vendors prior to or later than contracted access will incur a \$500/hour additional charge. Deliveries, load-in, set-up, strike and load-out must occur within access contracted times.

\*\*Portland Fire and Rescue permit fees range from \$150-300. Payment for any cost above \$150 will be the responsibility of the client.

\*\*\*Depending on the nature of the event, additional security costs may be incurred. Artful Venues Sales Team will be able to assist you in identifying areas that have potential cost implications.

**Additional Services Available** *Contact Artful Venues Sales Team for details or a customized quote*

Upgraded Internet | Advanced AV | Additional Power Supply | Décor Lighting | Furniture Rental | Coat Check



Visit the **Artful Venues** website for more images and 360° tours  
[events.portlandartmuseum.org](https://events.portlandartmuseum.org) | [pam.to/truetour](https://pam.to/truetour)